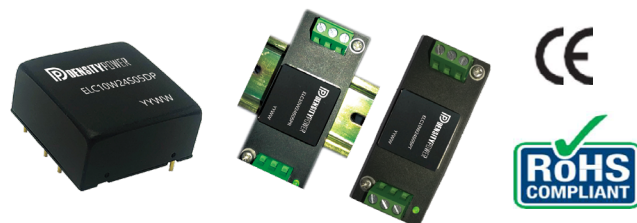


FEATURES

- Cost-effective
- 4:1 wide input range: 9-36/18-75VDC
- Single & bipolar outputs: 3.3, 5, 9, 12, 15, 24, ± 5 , ± 9 , ± 12 , ± 15 , ± 24 Volts DC
- 10W isolated output
- Efficiency up to 86%
- 1.6KVDC I/O isolation
- Operation temperature: -40°C to $+85^{\circ}\text{C}$
- Standard 1.0"×1.0"×0.47" DIP footprint, Din-rail & wall mount type options
- Extensive self-protection, UVLO, OTP, OVP, OCP and short-circuit protection
- Outstanding thermal dissipation
- Fully encapsulated, high reliability
- MTBF ≥ 1 Mhrs
- Compliance with RoHS



PRODUCT OVERVIEW

The ELC10W24/48 series are highly reliable, and efficient isolated DC/DC converter. Wide input range of 9-36 (24V nominal)/18-75V (48V nominal) is ideal for automation, power grid, semiconductor equipment, instrumentation, test and measurement, and distribution power system.

A wealth of self-protection features included input under-voltage lockout, over temperature shutdown; overcurrent protection with "hiccup" autorestart technique, provides short-circuit protection, along with output OVP.

Advanced fully encapsulated package technology provides outstanding EMC and thermal performance, which is ideal for ruggedized applications involving harsh environments. Wall mount and Din-rail mount type are available for maximum design-in flexibility.

The ELC10W24/48 series are designed to safety standards IEC/EN 62368-1.

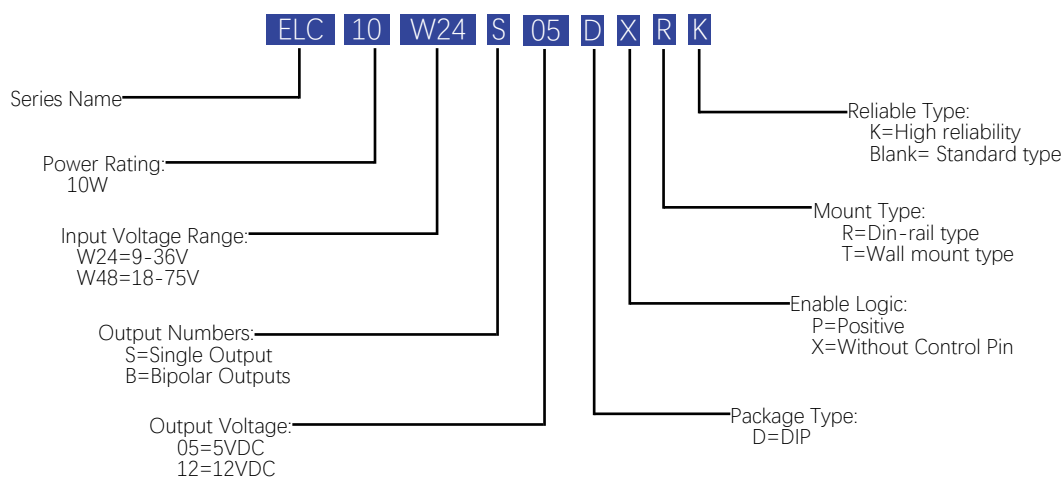
Models Selections

Basic Models	Input Voltage [VDC]	Input Voltage Range [VDC]	Output Voltage [VDC]	Output Current [A]	Efficiency Typ. [%]	Capacitive Load Max. [μF]	Package [inch]
ELC10W24S03	24	9-36	3.3	2.4	78	2200	1"×1"×0.47" DIP
ELC10W24S05	24	9-36	5	2	83	2200	
ELC10W24S09	24	9-36	9	1.11	85	680	
ELC10W24S12	24	9-36	12	0.833	86	470	
ELC10W24S15	24	9-36	15	0.667	86	330	
ELC10W24S24	24	9-36	24	0.416	88	100	
ELC10W24B05	24	9-36	± 5	± 1	83	± 1000	
ELC10W24B09	24	9-36	± 9	± 0.555	86	± 680	
ELC10W24B12	24	9-36	± 12	± 0.416	87	± 100	

Models Selections

Basic Models	Input Voltage [VDC]	Input Voltage Range [VDC]	Output Voltage [VDC]	Output Current [A]	Efficiency Typ. [%]	Capacitive Load Max. [μ F]	Package [inch]
ELC10W24B15	24	9-36	± 15	± 0.333	87	± 330	1"×1"×0.47" DIP
ELC10W24B24	24	9-36	± 24	± 0.208	87	± 100	
ELC10W48S03	48	18-75	3.3	2.4	79	2200	
ELC10W48S05	48	18-75	5	2	83	2200	
ELC10W48S12	48	18-75	12	0.833	87	470	
ELC10W48S15	48	18-75	15	0.667	87	330	
ELC10W48S24	48	18-75	24	0.416	88	100	
ELC10W48B05	48	18-75	± 5	± 1	83	± 1000	
ELC10W48B12	48	18-75	± 12	± 0.416	87	± 470	
ELC10W48B15	48	18-75	± 15	± 0.333	87	± 330	
ELC10W48B24	48	18-75	± 24	± 0.208	87	± 100	

Model Numbering



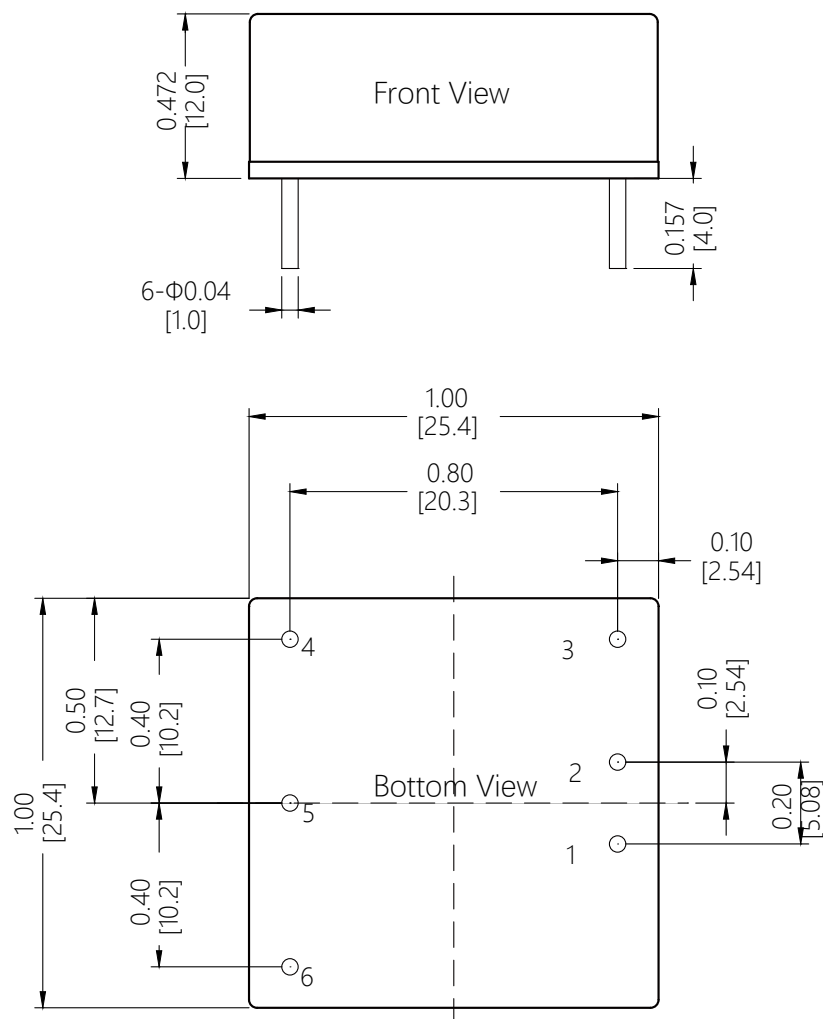
Absolute Maximum Ratings					
Parameters	Conditions	Min.	Typ.	Max.	Units
Input Voltage Continuous	24V type	-0.7		40	VDC
	48V type	-0.7		80	VDC
Input Voltage Transient	<100ms, 24V type			50	VDC
	<100ms, 48V type			100	VDC
Operating Case Temperature		-40		100	°C
Operating Environment Temperature	>71°C with derating	-40		85	°C
Storage Temperature Range		-55		125	°C
Soldering Temperature	Wave soldering < 10s			260	°C
Cooling	Free air convection				
Safety and EMC Compliance					
Conducted Emission	EN55032	Class B (With external filter)			
Radiated Emission	EN55032	Class B (With external filter)			
Conducted Susceptibility	IEC6100-4-6	3Vrms Criteria A			
Radiated Susceptibility	IEC6100-4-3	10V/m Criteria A			
EFT	IEC6100-4-4	±2KV Criteria B (With external filter)			
Surge	IEC6100-4-5	±2KV Criteria B (With external filter)			
ESD	IEC6100-4-2	Contact: ±4KV Air: ±6KV Criteria B			
Isolation Safety Rating	Basic insulation				
Input Specifications					
Parameters	Conditions	Min.	Typ.	Max.	Units
Operating Voltage Range	24V type	9	24	36	VDC
	48V type	18	48	75	VDC
Start-up Threshold	24V type			9	VDC
	48V type			18	VDC
Under Voltage Shutdown	24V type	5.5	6.5		VDC
	48V type	12	15.5		VDC
Input Current @ No Load	24V type		10	18	mA
	48V type		8	15	mA
Input Current @ Min. Line	24V type		1.5		A
	48V type		0.8		A
Reflected Ripple Current	24V type		40		mA
	48V type		30		mA
Recommended Input Fuse	24V type		3		A
	48V type		1.5		A
Recommended External Input Capacitance	1μF CBB and 100μF E-cap used in combination		100		μF

General Specifications					
Parameters	Conditions	Min.	Typ.	Max.	Units
Isolation Voltage (1 minute, 1mA)	Input to output	1500			VDC
	Input to case	1000			VDC
	Output to case	1000			VDC
Isolation Resistance	Input to output, Viso=500VDC	1000			MΩ
Isolation Capacitance	Input to output		2000		pF
Switching Frequency			300		KHz
On/Off Remote Control	Positive logic, On state	Open or $2.7 \leq V_r \leq 9$			VDC
	Positive logic, Off state	Short or $0 \leq V_r \leq 1.2$			VDC
Start-up Delay	From undervoltage shutdown recovery to 10% Vout		30		mS
Rise Time	From 10% Vout to 90% Vout capacitive load		10		mS
Vibration	IEC 60068-2-64, Environmental testing - Part 2				
Shock (Operational)	IEC 60068-2-27, Environmental Testing- Part 2.27				
Output Specifications					
Parameters	Conditions	Min.	Typ.	Max.	Units
Vout Accuracy		-3		+3	%
Line Regulation (Min. line to max. line, Full load)	Positive output	-0.5		+0.5	%
	Negative output	-1		+1	%
Load Regulation (15%-100% load, Vin=nom.line)	Positive output	-1		+1	%
	Negative output	-1.5		+1.5	%
Cross Regulation	Main load 50%, the other load 10%-100%	-5		+5	%
Temperature Coefficient	From -40℃ to 85℃	-0.03		+0.03	% of Vout /℃
Over Current Protection	Hiccup, auto-recover	110	140	190	%
Over Voltage Protection		110		160	%
Output Short Protection	Hiccup, auto-recover				
Ripple & Noise Max. ①			40	80	mV Pk-Pk
Dynamic Load Peak Deviation ②		-5		+5	% of Vout
Dynamic Load Response	Within 1% band of Vout deviation		300	500	μS
Minimum Load	No minimum load required				
Notes					
① Ripple & noise is tested with certain filter parameters, please see output ripple & noise in technical notes on page 9 for more details.					
② Load is set from 50%-75%-50% of full load, di/dt=0.1A/μS.					

All specifications are tested at 25 °C ambient temperature, nominal input voltage, rated output current conditions unless otherwise specified.

Mechanical Specifications

ELC10W24/48 SERIES: DIP TYPE



PIN:

Pin1, PIN2, PIN3, PIN4, PIN5, PIN6: Φ0.040

Force: Applied force not exceed 4.9N

Material: Copper alloy

Finish: Gold 3 ~ 5μm(min.) over nickel 50μm(Min.)

TOLERANCE:

X.XX=±0.02 (0.5)

X.XXX= ±0.010 (0.25)

Dimensions are in inches [mm]

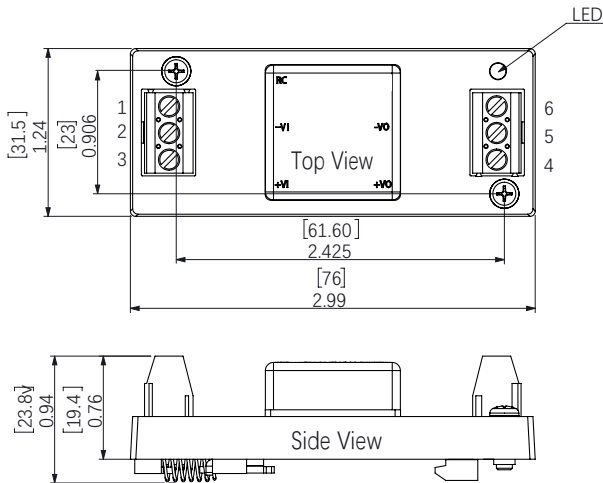
Weight: ~15g.

PIN CONNECTIONS

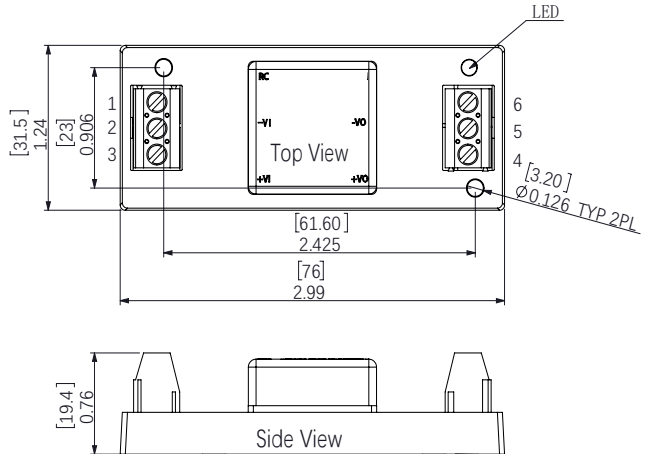
Single Output		Bipolar Output	
Pin	Function	Pin	Function
1	+Vin	1	+Vin
2	-Vin	2	-Vin
3	RC	3	RC
4	-Vout	4	-Vout
5	No Pin	5	COM
6	+Vout	6	+Vout

Mechanical Specifications

ELC10W24/48 SERIES: DIN-RAIL TYPE



ELC10W24/48 SERIES: WALL MOUNT TYPE



Hole screw locked torque: 0.4N·m Max
Terminal screw locked torque: 0.25N·m Max

Tolerance:

X.XX=±0.02 (0.5)

X.XXX= ±0.010 (0.25)

Dimensions are in inches [mm]

Weight:

Din-rail Type: ~60g

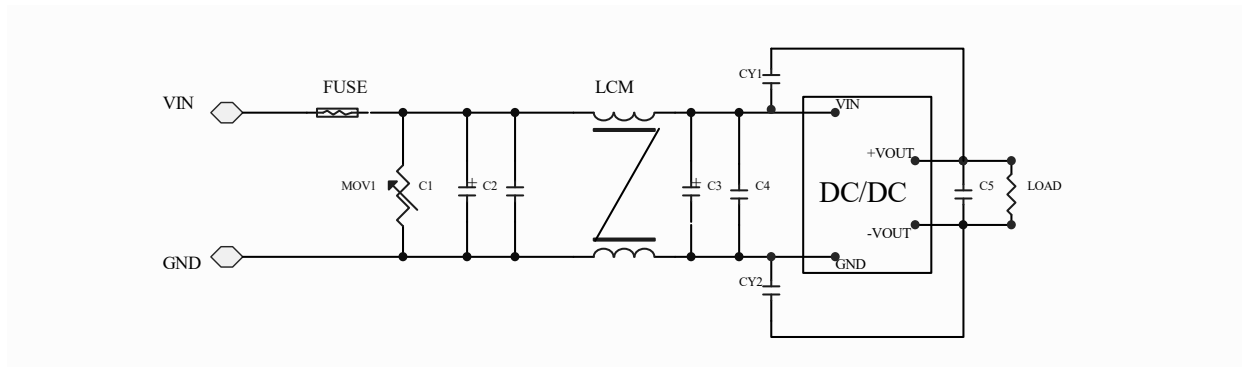
Wall Mount Type: ~40g.

PIN CONNECTIONS

Single Output		Bipolar Output	
Pin	Function	Pin	Function
1	RC	1	RC
2	-Vin	2	-Vin
3	+Vin	3	+Vin
4	+Vout	4	+Vout
5	-Vout	5	-Vout
6	No Pin	6	GND

Emissions Performance

Density Power measures its products for conducted emissions against the EN50121-3-2 standards. The common mode filter is added at the output of the module, and the maximum output power of the module is 10W. Input voltage is 24/48VDC, EMI filter is added outside the modules and the conduction limit can meet standards.



Conducted Emissions Test Circuit

Recommended Filter Parameters

Reference	Description For 24 Vin	Description For 48 Vin
Mov1	20D470K	14D101K
C1	680 μ F/50V	680 μ F/100V
C2	1 μ F/50V	1 μ F/100V
C3	330 μ F/50V	330 μ F/100V
C4	4.7 μ F/50V	4.7 μ F/100V
C5	10 μ F	10 μ F
LCM	4.7mH	
CY1, CY2	1nF/2KV	

Technical Notes

INPUT FUSING

Certain applications may require fuse at the inputs of power conversion components. Fuses should also be used when there is possibility of sustained input voltage reversal which is not current limited. The ELC10W24/48 modules are not internally fused. We strongly recommend a slow-blown fuse to be used in the ungrounded input supply line. For safety agency approvals, the installer must install the converter in compliance with the end user safety standard.

TYPICAL APPLICATION CONNECTION

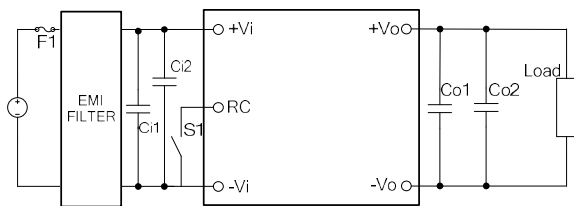


Figure 1: Typical Application Connection
Single Output

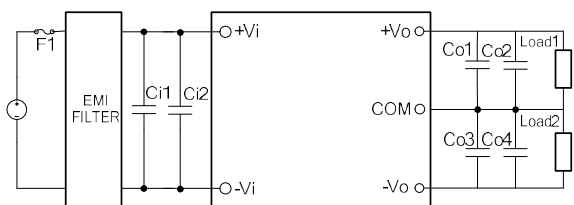


Figure 2: Typical Application Connection
Bipolar Outputs

In order to prevent the input line from causing the input oscillation, it is recommended to add the input capacitor close to the input of the module. Similarly, the output capacitor is added to the output of the module. Specific recommended parameters: input capacitance $Ci1=100\mu F$ electrolytic capacitor, $Ci2 = 1\mu F$ CBB capacitor. Output Capacitance $Co1=10\mu F$ tantalum capacitor, $Co2$ ESR $<0.1\Omega$. For bipolar outputs, $Co3$ & $Co4$ are the same as $Co1$ & $Co2$. Please refer to capacitive load for details.

REFLECTED RIPPLE CURRENT

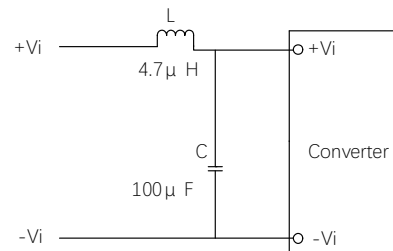


Figure 3: Reflected Ripple Current

Add LC filter at the front of the power module to reduce the interference of reflected ripple current on the DC bus, recommended value of L and C with appropriate current and voltage rating as below: $L=4.7\mu H$; $C=100\mu F$.

REMOTE CONTROL FUNCTION

Module Power Remote Control or called ON/OFF pin is for the user to enable or disable the output. Control use high and low level control, there are two general control logic, positive logic or negative logic control. Recommend to use optocoupler to control ON/OFF Pin as below.

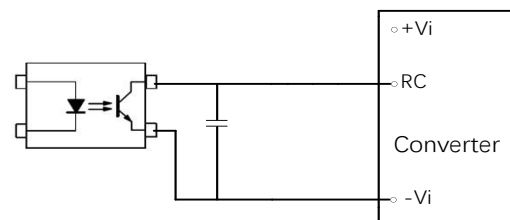


Figure 4: Remote Control

Remote Control Pin can be connected in parallel for multiple converters which with the same Remote Control characters. However, when several converters share the same remote control circuits, the total sink and source current must be taken into consideration, and make sure that the optocoupler has enough drive capability.

To reduce external PCB trace interference, it is recommended to add high frequency bypass capacitor between RC pin and $-Vi$, recommended capacitor value is 100-1000pF.

Technical Notes

OUTPUT RIPPLE & NOISE

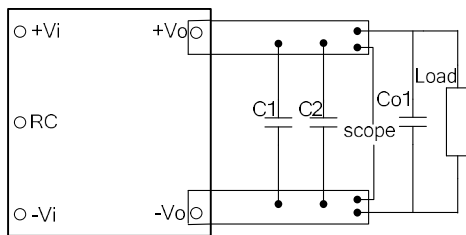


Figure 5- Output Ripple & Noise For Single Output

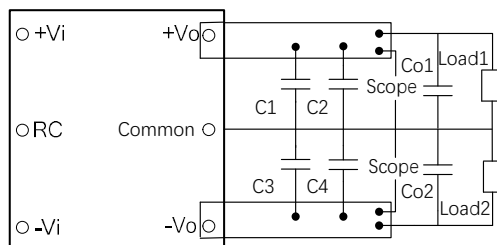


Figure 6- Output Ripple & Noise For Bipolar Outputs

These ELC10W24/48 modules' output ripple and noise is measured at the rated input voltage and output current, along with 10uF and 0.1uF MLCC used in parallel with appropriate voltage ratings and placed as C1, C2, C3, C4 shown in the figure above. The scope's bandwidth is set to 20MHz. External output capacitors are required to reduce the ripple & noise. The output capacitors should be low ESR and appropriate frequency response with appropriate voltage ratings, and must be located as close to the converters as possible, also PCB layout must be taken into consideration.

INPUT UNDERVOLTAGE SHUTDOWN AND START-UP THRESHOLD

Once operating, module will not turn off until the input voltage drops below the Undervoltage Shutdown threshold. Subsequent re-start will not occur until the input is brought back up to the Start-Up Threshold. This built in hysteresis prevents any unstable on/off situations from occurring at a single input voltage.

CURRENT LIMITING

The maximum current limit remains constant as the output voltage drops. However, once the impedance of the short across the output is small enough to make the output voltage drop below the specified Output Current Limit Shutdown Voltage, the converter turns off.

The converter then enters into "hiccup mode" where it repeatedly turns on and off until the short circuit condition is removed. This prevents excessive heating of the converter or the load board.

SHORT CIRCUIT CONDITION

When the converter is in current-limit mode, the output voltage will drop as the output current demand increases and then the converter will be shut down. If the short-circuit condition persists, another shutdown cycle will be initiated. This on/off cycling is referred to as "hiccup" mode. The hiccup cycling reduces the average output current, thereby preventing internal temperatures from rising to excessive levels. The module is capable of enduring an indefinite short circuit output condition.

OUTPUT OVERVOLTAGE PROTECTION

When the output voltage exceeds the overvoltage protection set point, the module enters the overvoltage protection mode. The output voltage is kept at the overvoltage protection point and is limited to the continuous increase of the output voltage. When the external overvoltage condition disappears, the module automatically returns to normal operation.

THERMAL SHUTDOWN

These ELC10W24/48 converters are equipped with thermal-shutdown circuitry. If environmental conditions cause the internal temperature of the DC-DC converter to rise above the designed operating temperature, a precision temperature sensor will power down the unit. When the internal temperature decreases below the threshold of the

Technical Notes

temperature sensor, the unit will auto restart.



This product is subject to the following operating requirements and the Life and Safety Critical Application Sales Policy:

Refer to: <http://www.densitypower.com>

Density Power makes no representation that the use of its products in the circuits described herein, or the use of other technical information contained herein, will not infringe upon existing or future patent rights. The descriptions contained herein do not imply the granting of licenses to make, use, or sell equipment constructed in accordance therewith. Specifications are subject to change without prior notice.